

# LASER-LINE CARCASSING SYSTEM

## **BAILEY LASER-LINE BRINGS THE BENEFITS OF MODERN SYSTEMISED BUILDING METHODS TO CARCASSING, INCREASING SPEED, ACCURACY AND ECONOMICS OF EAVES INSTALLATION**

The creativity and impact made possible by specifying Bailey architectural systems has been extended by the introduction of Bailey Laser-Line.

Laser-Line is an accurately fabricated one-piece component that can be aligned using laser beams or traditional methods.

Using laser beams allows complete elevations to be aligned quickly and straightforwardly and with far greater accuracy than with traditional measurement. Laser-Line's strength and light weight means that the carcassing brackets fix directly to the structure at as few as two points. Dependent on site conditions,

Laser-Line can be installed using either mobile or standing access.

As a single component, often for the entire eaves installation, Laser-Line eliminates the use of separate rails, angles and channels, thus reducing the time taken to install carcassing and removing the problems of aligning separate components.

With the introduction of Laser-Line as part of its Impact eaves system, Bailey has again provided an innovative solution that helps architects to create interesting buildings and contractors obtain better site practice.

As Laser-Line offers accuracy and speed of installation the result is effective and measurable economies of installation.

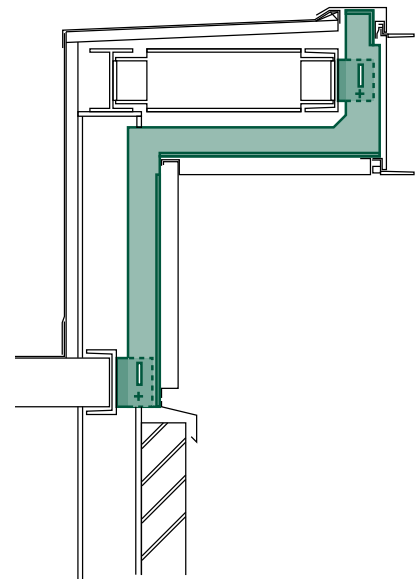
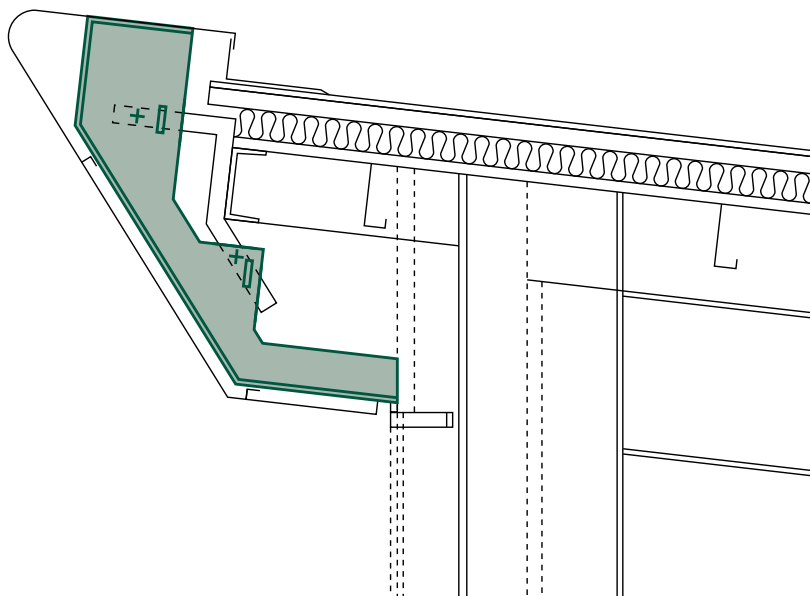
# BAILEY LASER-LINE

Laser-Line is fabricated from aluminium or galvanised steel. Thickness and centres are determined according to the size and nature of the eaves design and are backed by calculations and loading tests from both live and dead loads.

Each carcassing component consists of a one-piece support accurately punched and folded from sheet metal under stringent factory conditions. Because manufacture takes place off site, accuracy of each component is more easily obtained, making overall on-site accuracy easier to achieve.

Laser-Line can be used as a primary carcassing system fixed directly to the structure or as a secondary system being taken off external steelwork depending on the extent of the eaves projection. Laser-Line can be installed using both mobile and standing access.

Most Laser-Line systems are fabricated in aluminium which has the advantage of reducing intermetallic contact. Generally, if fixing to steel, isolating tape is only required at two points of contact for each bracket.



Once the Laser-Line carcassing has been installed other Bailey eaves systems components are simply and quickly fixed to complete the soffits, rainwater systems and eaves features.

Bailey Laser-Line should be selected in combination with other Bailey Impact Eaves products such as I-Line, Bailey Cassette or V-Joint soffit systems and Bailey Rainwater Systems to create complete eaves features to meet both aesthetic and functional requirements. Full information and specification details on Bailey Impact Eaves are in the relevant datasheets and in the Bailey technical handbook.

Bailey Laser-Line is designed to combine low maintenance with an expected life of at least 25 years in most environments.

